



MERCEDES MORÁN

DANIEL FANEGO

ALBERTO AMMANN

JOSÉ CORONADO

BETIBÚ

THIS CRIME WAS ONLY THE BEGINNING

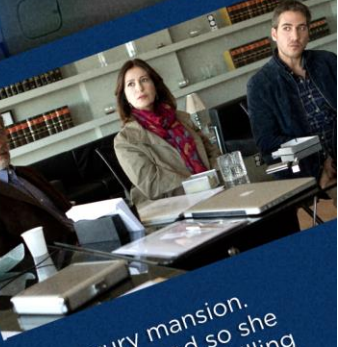
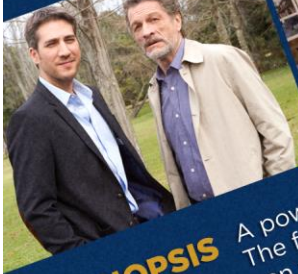
NOELMAN PEREKI as Gato OSMAIR NUÑEZ CAROLA REYNA GERARDO ROMANO LITO CRUZ MARCELA RIPPOLAS CAROLINA URRUTIA JOSEAN GONZALEZ PRODUCED BY PULPERO
EDITED BY FELIX BLAZQUEZ MUSIC BY FEDERICO JUSO PRODUCED BY MARCELA RESNOLFSKY GERARDO HERBERO VANESSA RAGONE MARCELA RESNOLFSKY VANESSA RAGONE
CO PRODUCERS DANIEL BIRMAN DIEGO YUDOVICHY AXEL AUSCHERWATZKY SCRIPT BY ANA COHAN MIGUEL COHAN

BASED ON A NOVEL BY CLAUDIA PIÑEIRO DIRECTED BY MIGUEL COHAN

MBR0058 TOMASOL FILMS BDCINE ZONA AUDIOVISUAL tve

BETIBU

THIS CRIME WAS ONLY THE BEGINNING



SYNOPSIS

A powerful industrialist is found with his throat cut in his luxury mansion. The famous novelist Betibu agrees to move into the neighbourhood so she can write the chronicles of the case, but she soon discovers that this killing is just one in a series of murders of powerful men who share a dark past.

CAST

Alberto Ammann,
José Coronado,
Mercedes Morán,
Daniel Fanego

CREW

Director: Miguel Cohan
Producer: Vanessa Ragone, Mariela Besuievsky, Gerardo Herrero
Screenplay: Ana Cohan and Miguel Cohan, based on the novel "Betibú" by Claudia Piñeiro
Director of Photography: Rodrigo Pulpeiro
Music: Federico Jusid

ORIGINAL TITLE: BETIBÚ GENRE: THRILLER
NATIONALITY: SPAIN, ARGENTINA
LANGUAGE: SPANISH YEAR: 2014
LENGTH: 100 MIN. ASPECT RATIO: 1:2.35 SOUND: 5.1

LOTIDO
www.latidofilms.com

Miren Zamora
International Sales
Mobile: +34 655 687 927
miren@latidofilms.com

Juan Torres
Sales & Acquisitions
Mobile: +34 635 431 270
juan@latidofilms.com

Giannina Antola
TV Consultant
Mobile: +44 776 463 8240
giannina@antola.tv

Oscar Alonso
Festivals
Mobile: +34 675 526 497
oscar@latidofilms.com

